

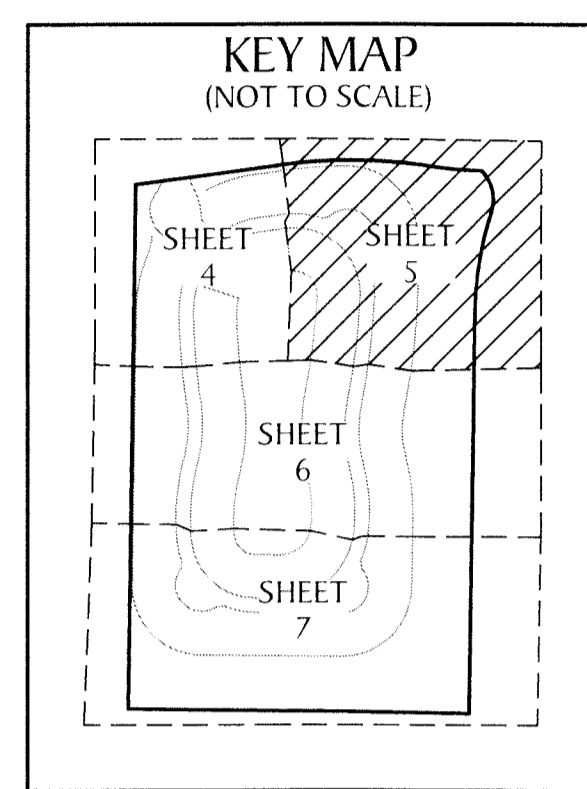
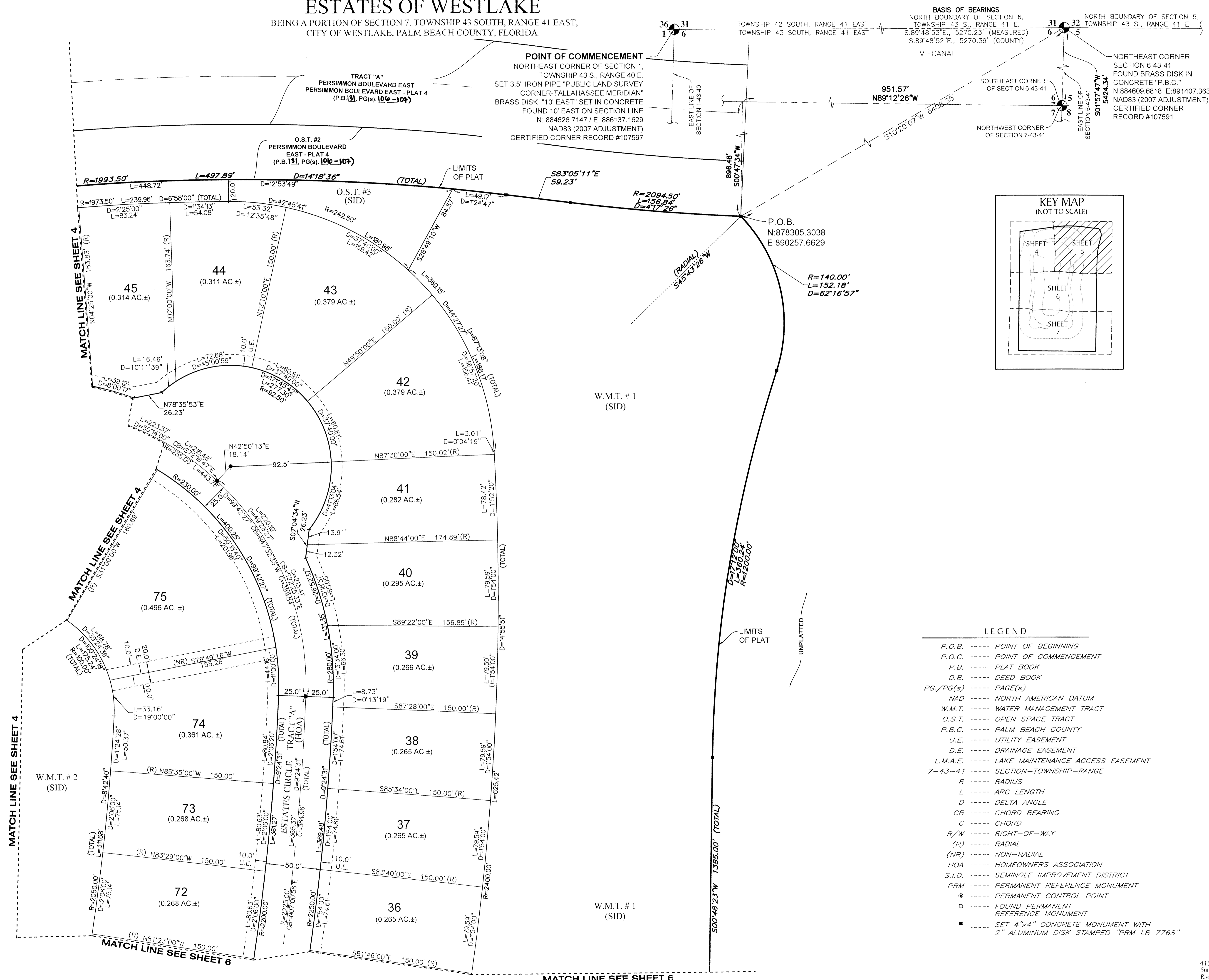
ESTATES OF WESTLAKE

BEING A PORTION OF SECTION 7, TOWNSHIP 43 SOUTH, RANGE 41 EAST,
CITY OF WESTLAKE, PALM BEACH COUNTY, FLORIDA.

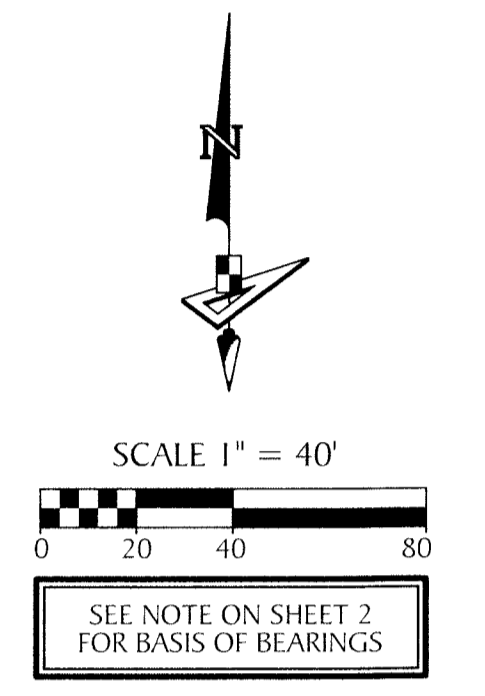
POINT OF COMMENCEMENT
NORTHEAST CORNER OF SECTION 1,
TOWNSHIP 43 S., RANGE 40 E.
SET 3.5" IRON PIPE "PUBLIC LAND SURVEY
CORNER-TALLAHASSEE MERIDIAN"
BRASS DISK "10" EAST" SET IN CONCRETE
FOUND 10' EAST ON SECTION LINE
N: 884626.7147 / E: 886137.1629
NAD83 (2007 ADJUSTMENT)
CERTIFIED CORNER RECORD #107597

BASIS OF BEARINGS
NORTH BOUNDARY OF SECTION 6,
TOWNSHIP 43 S., RANGE 41 E.,
S.89°48'53"E., 5270.23' (MEASURED)
S.89°48'52"E., 5270.39' (COUNTY)

NORTHEAST CORNER
SECTION 6-43-41
FOUND BRASS DISK IN
CONCRETE "P.B.C."
N:884609.6818 E:891407.3638
NAD83 (2007 ADJUSTMENT)
CERTIFIED CORNER
RECORD #107591



112



- LEGEND**
- P.O.B. ----- POINT OF BEGINNING
 - P.O.C. ----- POINT OF COMMENCEMENT
 - P.B. ----- PLAT BOOK
 - D.B. ----- DEED BOOK
 - PG./PG(s) ----- PAGE(S)
 - NAD ----- NORTH AMERICAN DATUM
 - W.M.T. ----- WATER MANAGEMENT TRACT
 - O.S.T. ----- OPEN SPACE TRACT
 - P.B.C. ----- PALM BEACH COUNTY
 - U.E. ----- UTILITY EASEMENT
 - D.E. ----- DRAINAGE EASEMENT
 - L.M.A.E. ----- LAKE MAINTENANCE ACCESS EASEMENT
 - 7-43-41 ----- SECTION-TOWNSHIP-RANGE
 - R ----- RADIUS
 - L ----- ARC LENGTH
 - D ----- DELTA ANGLE
 - CB ----- CHORD BEARING
 - C ----- CHORD
 - R/W ----- RIGHT-OF-WAY
 - (R) ----- RADIAL
 - (NR) ----- NON-RADIAL
 - HOA ----- HOMEOWNERS ASSOCIATION
 - S.I.D. ----- SEMINOLE IMPROVEMENT DISTRICT
 - PRM ----- PERMANENT REFERENCE MONUMENT
 - ----- PERMANENT CONTROL POINT
 - ----- FOUND PERMANENT REFERENCE MONUMENT
 - ----- SET 4"x4" CONCRETE MONUMENT WITH 2" ALUMINUM DISK STAMPED "PRM LB 7768"

GeoPoint
Surveying, Inc.

4152 W. Blue Heron Blvd. Phone: (561) 444-2720
Suite 105 www.geopointsurvey.com
Riviera Beach, FL 33404 Licensed Business Number LB 7768

Sheet No. 5 of 7 Sheets